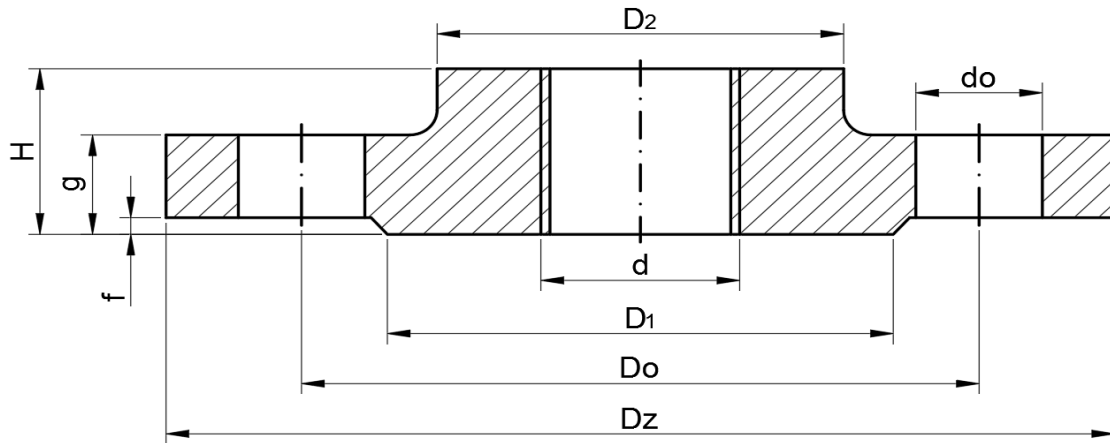


KOLNIERZ GWINTOWANY Z SZYJKĄ

wg EN 1092-1



Ciężnienie nominalne PN 10 / PN 16												
DN	Kolnierz										Śruby	
	Gwint d	Dz	Do	do	g	H	D ₂	D ₁	f	masa kg	n	Gwint
10	3/8"	90	60	14	14	20	30	40	2	0,54	4	M12
15	1/2"	95	65	14	14	20	35	45	2	0,61	4	M12
20	3/4"	105	75	14	16	24	45	58	2	0,91	4	M12
25	1"	115	85	14	16	24	52	68	2	1,1	4	M12
32	1 1/4"	140	100	18	16	26	60	78	2	1,6	4	M16
40	1 1/2"	150	110	18	16	26	70	88	3	1,78	4	M16
50	2"	165	125	18	18	28	85	102	3	2,43	4	M16
65	2 1/2"	185	145	18	18	32	105	122	3	3,18	4	M16
80	3"	200	160	18	20	34	118	138	3	4,12	8	M16
100	4"	220	180	18	20	38	140	158	3	4,47	8	M16